

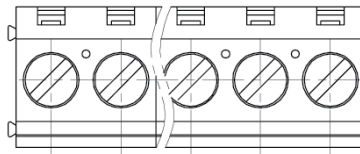
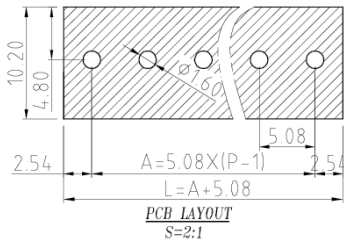


5.08mm Pitch

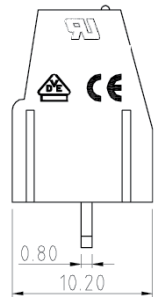
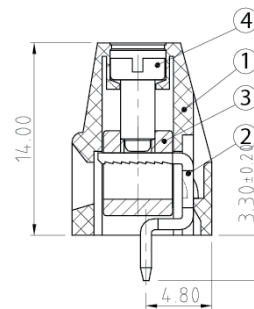
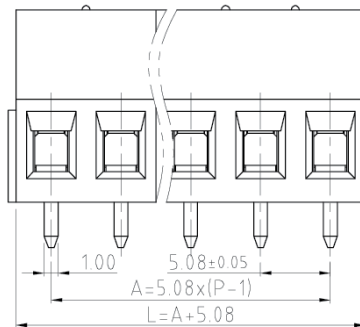
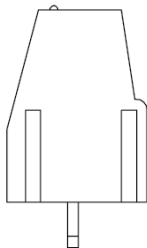


		
Rated Voltage	300V	320V
Rated Current	20A	24A
Insulation Withstand Voltage	AC 2000V / Min.	
Insulation Resistance	500MΩ or More at DC500V	
Temperature Range	-40°C to +120°C	
Screw Torque	0.4N.m	
Wire Range	24-12AWG	0.2-2.5mm ²

Units: mm



- ① Housing: PA66/6 (UL94-V0)
- ② Solder Pin: Brass, Tin Plated
- ③ Block: Brass, Nickel Plated
- ④ Screw: Steel, Zinc Plated



Part Numbering System:

106-508V - XXP - XXX

① ② ③

① Series

② Number of Poles: 02, 03, 04, ..., 24

③ Insulator Color: GRN = Green

# Pin	2	3	4	5	6	7	8	9	10	11	12	13
Dim L	10.16	15.24	20.32	25.4	30.48	35.56	40.64	45.72	50.8	55.88	60.96	66.04
Dim A	5.08	10.16	15.24	20.32	25.4	30.48	35.56	40.64	45.72	50.8	55.88	60.96
# Pin	14	15	16	17	18	19	20	21	22	23	24	
Dim L	71.12	76.2	81.28	86.36	91.44	96.52	101.6	106.68	111.76	116.84	121.92	
Dim A	66.04	71.12	76.2	81.28	86.36	91.44	96.52	101.6	106.68	111.76	116.84	